

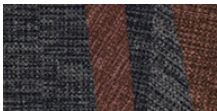
**PGIM Letterkenny**



AL Architects were appointed for as Architects and DTL for this accelerated office refurbishment and fitout project comprising circa 1970sqm at ground floor and 275sqm at mezzanine level. The existing building was stripped back to bare shall and redesigned to accommodate several departments within the PGIM company. "We have an extensive history working with Forbo and particularly Paul Carney. The practice has a history of health board and Education projects , both completed and current with which Forbo have supplied mainly sheet flooring such as Marmoleum and Surestep. We made initial contact with Paul pre tender to discuss our aspirations and visons for the building and were offered a comprehensive selection of carpet and sheet finishes. From these the initial design proposals were formulated and received client approval in principal. The inevitable post tender cost analysis resulted in a 35% reduction in the flooring budget but with the same expectancy with regard to quality and finish. The conversation with Forbo was very simple: "We have this amount of money; we need to achieve a high end finish throughout the building...what are our options?"

Project name	PGIM HQ Refurbishment
Location	Letterkenny, Co Donegal, Ireland
Architect	AL Architects Ltd
Floor Designer	Damien Kearns, Adam Leadley
General Contractor	Boyle Construction
Flooring Contractor	Ardmore Flooring
Photographer	Kelvin Gillmor

**Used Products**



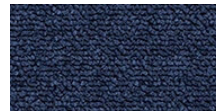
Flotex Converge planks  
Converge radiant



Tessera Layout & Outline  
calcium



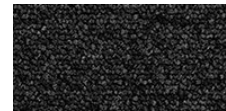
Tessera Layout & Outline  
soda



Tessera Layout & Outline  
oceanis



Tessera Layout & Outline  
bubblegum



Tessera Layout & Outline  
mono



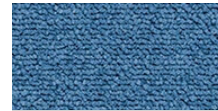
Tessera Layout & Outline plasmatron



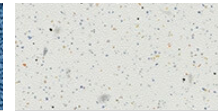
Tessera Layout & Outline alloy



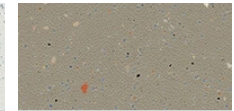
Tessera Layout & Outline maraschino



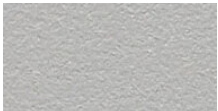
Tessera Layout & Outline ice pop



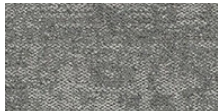
Surestep Original snow



Surestep Original cement



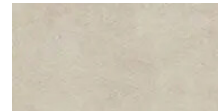
Surestep Laguna silver grey



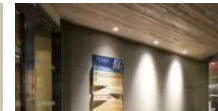
Tessera Infused morning cloud



Allura Dryback 0.55 Material natural concrete



XX Allura Flex Material white sand



Nuway Grid



